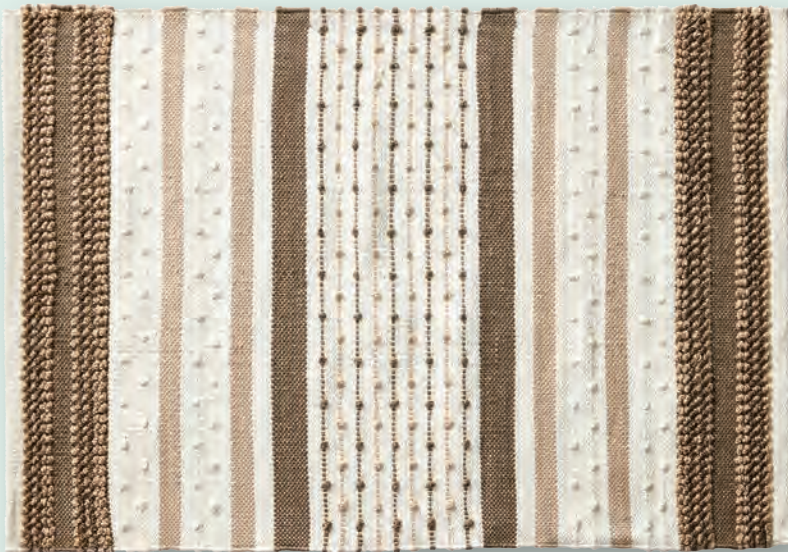


entryways

Welcome the Wonderment of Fall & Winter Season



FALL & HOLIDAY 2023



entryways

Welcome the Wonderment of Fall & Winter Season



As the air turns crisp and nature softens its colors, embrace the enchantment of fall and winter with our new collection of riveting designs. Bringing joy to the home and to everyday living, Entryways continues to be your leading destination for sustainable outdoor home accents that balance comfort with style. Handcrafted doormats with disguised durability offer joyful welcomes to every season, while artistically woven rugs lay the foundation for exceptional at-home comfort. A considerable range of outdoor pillows brings the collection full-circle, ensuring functional décor extends to every corner. Transforming house into home, Entryways promises lasting quality and remarkable design in every facet, both indoors and out.





Doormats



NEW
DESIGNS
FOR
2023



Our fall and winter 2023 collection embraces true seasonal magic, tying in elements of nostalgia with freshness and modernity. Dressing the entryway with festive felicitations, memories of holiday joy and tradition are reawakened through cheerful compositions of color and whimsy, setting the tone for coziness and warmth.

V: 100% coir with backing - 18" x 30" - Case Pack of 4. P: 100% coir with backing - 17" x 28" - Case Pack of 4.
S: 100% handwoven coir - 18" x 30" - Case Pack of 1.



2461S - Merry Mailbox



P2459 - Snow Globe Magic



P2460 - Peaceful Tidings



V325 - Penguin



V326 - Santa Claus Greetings



V327 - Winter Sleigh Ride



2455S - Woodland Wonder



P2456 - Abstract Amber



P2457 - Harvest Hues



P2458 - Witching Hour



HALLOWEEN

P: 100% coir with backing - 17" x 28" - Case Pack of 4. S: 100% handwoven coir - 18" x 30" - Case Pack of 1.

NEW



P2458 - Witching Hour



P2436 - Rest in Peace



P2300 - Hocus Pocus 18" x 26"



P2434 - Welcome Mortals



P2380 - Three Ghosts



P2023 - Cat Face



P2381 - Witch Parking



P2037 - Boo



P2073 - Enter if You Dare



P22965 - Día de los Muertos



P2435 - Wipe Your Feet

FALL

P: 100% coir with backing - 17" x 28" - Case Pack of 4. S: 100% handwoven coir - 18" x 30" - Case Pack of 1.

NEW



P2456 - Abstract Amber

NEW



P2457 - Harvest Hues

NEW



2455S - Woodland Wonder



2427S - Cozy Vibes



2428S - Mod Autumn



P2431 - Pies for You



P2432 - Harvest Moon



P2433 - Rake Pile Jump



2081S - Pumpkin Patch



P2383 - Gone Pumpkin Picking



P2384 - Leaves



P2299 - Gather 19" x 27.5"



P2085 - Welcome Pumpkin



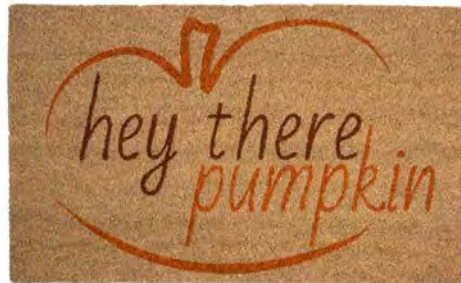
2374S - Maple Welcome



P2297 - Autumn Skies



P2240 - Happy Harvest



P2382 - Hey There, Pumpkin



2375S - Give Thanks



P2241 - Happy Fall Y'all



HOLIDAY

V: 100% coir with backing - 18" x 30" - Case Pack of 4. W: 100% handwoven coir - 22" x 35" - Case Pack of 1.

NEW



V325 - Penguin

V&A

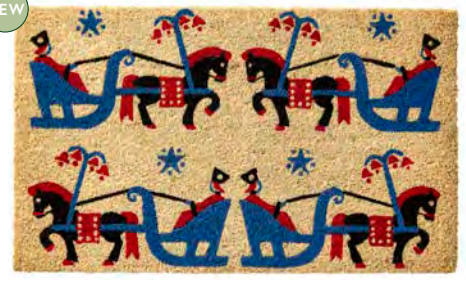
NEW



V326 - Santa Claus Greetings

V&A

NEW



V327 - Winter Sleigh Ride

V&A



9124W - Joy

Williamstown



9132W - Merry and Bright Star

Williamstown



9133W - Holiday Cardinal

Williamstown



9111W - Berry Branch

Williamstown



9117W - Dash Away All

Williamstown



9118W - Home for the Holidays

Williamstown



9139W - Winter Wishes

Williamstown



9137W - Merry Pine

Williamstown



9138W - Fresh Cut Pines

Williamstown

P: 100% coir with backing - 17" x 28" - Case Pack of 4. S: 100% handwoven coir - 18" x 30" - Case Pack of 1.

NEW



2461S - Merry Mailbox

NEW



P2459 - Snow Globe Magic

NEW



P2460 - Peaceful Tidings



P2441 - Polar Welcome



P2387 - Peace Love & Joy



2377S - Joyeux Noël



P2388 - Christmas Flamingo



2304S - Peace on Earth



P2245 - Winter Fir



P2385 - Gnomes



2376S - Poinsettia Welcome



2303S - Joyful Wishes



2378S - Ornament



2429S - Gift of Joy



2430S - Nordic Reindeer



P2437 - Holly Jolly



2238S - Antlers



2379S - Pair of Pine Cones



P2308 - Mod Presents



P984 - Pine Cones



P2389 - Stay Cozy



P2439 - Cheers



P2440 - Christmas Wreath



P2438 - Nutcrackers



From the abundant archives of the Victoria and Albert Museum comes our V&A doormat collaboration, transforming renowned illustrations into innovative home accents. As the world's leading museum of art, design and performance, its extensive collection of historic textiles and acclaimed artworks inspire an exquisite assortment of vibrant and sophisticated doormat styles, bringing high design to the doorway.

100% coir with backing. V: 18" x 30" - Case Pack of 4. V-L: 24" x 36" - Case Pack of 2.



V319 - Bold Floral
V319-L - Bold Floral Large



V320 - Avis
V320-L - Avis Large



V321 - Como
V321-L - Como Large



V304 - Strawberry Thief

V304-L - Strawberry Thief Large



V311 - Love in a Mist

V311-L - Love in a Mist Large



V317 - Ikat

V317-L - Ikat Large



V314 - Dianthus

V314-L - Dianthus Large



V306 - Waves

V306-L - Waves Large



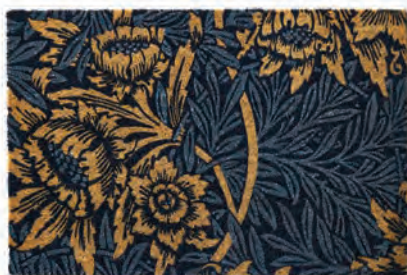
V318 - Arabian

V318-L - Arabian Large



V316 - Swan and Iris

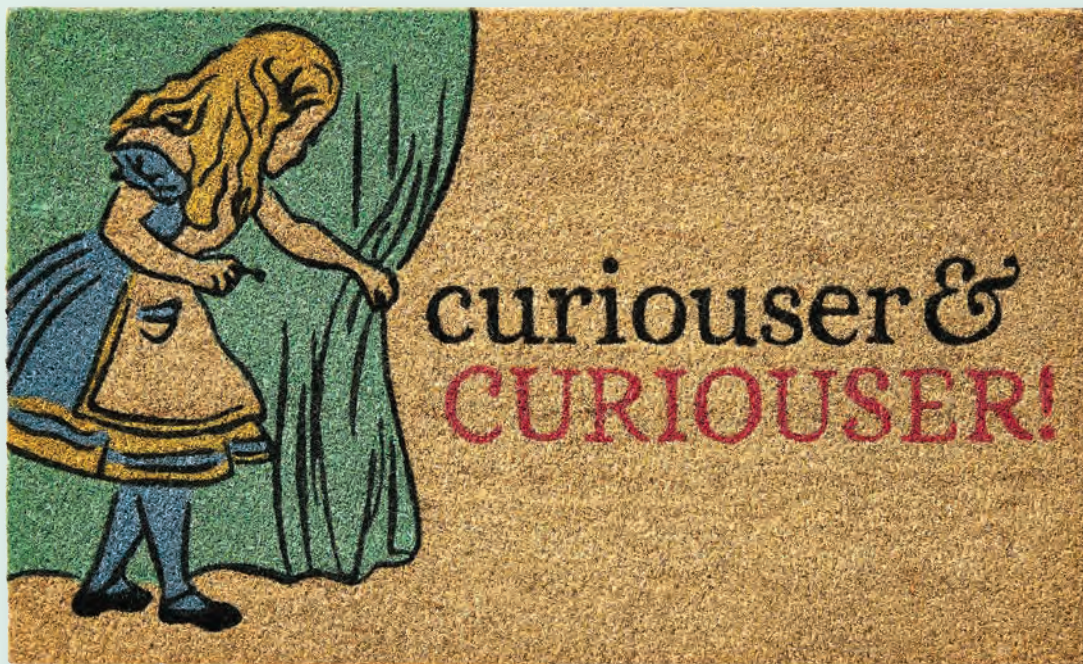
V316-L - Swan and Iris Large



V315 - Tulip and Willow

V315-L - Tulip and Willow Large

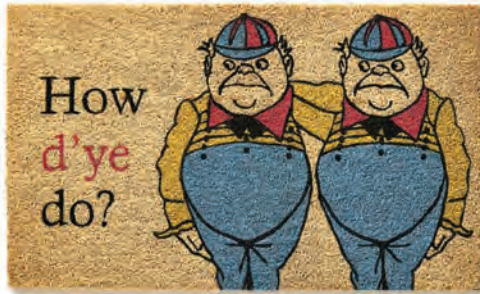
V&A



ALICE IN WONDERLAND

Our Alice in Wonderland collection steps through the looking-glass into Lewis Carroll's eccentric world of nonsense inhabited by a White Rabbit, the Tweedle twins and Hookah-Smoking Caterpillar, depicted by Sir John Tenniel in the 19th century and held in the V&A's collection of illustrations and rare editions. Enrich day-to-day reality and greet your guests with an inspired and enchanting combination of whimsical text and imagery.

100% coir with backing - 18" x 30" - Case Pack of 4.



V322 - How D'ye Do?



V323 - It's a Very Fine Day



V308 - Queen of Hearts



V307 - Mad Hatter



V309 - Curiouser and Curiouser



V310 - Down the Rabbit Hole



V324 - Who Are You?

Williamsburg

Trend and tradition intertwine to produce our Williamsburg collection, an exclusive assortment designed in collaboration with the Colonial Williamsburg Foundation. Preserved antiques such as artisan textiles and decorative wallpapers translate into timeless patterns for the home, enhanced with fresh colors that keep classic appeal. With a portion of proceeds supporting the Foundation itself, the Williamsburg collection brings forth quality designs that tell a time-honored story.

100% handwoven coir - 22" x 35" - Case Pack of 1.





9126W - Blanket Chest



9127W - Sunflower Blockprint



9103W - Pineapple Trellis



9131W - Flame Stitch



9130W - Home Again



9128W - Ahoy There



9140W - Print Block



9141W - Franklin Quilt



9142W - Ghost Blossoms



9134W - Madison



9135W - Portobello Peacock



9136W - Spring Blooms



2421S - Plaid
2421S-L - Plaid Large



2423S - The Rope (1.5" thick)
2423S-L - The Rope Large (1.5" thick)



2425S - Seagrass & Coir
2425S-L - Seagrass & Coir Large

NATURAL

Soft, organic textures and golden shades of coconut coir impart undeniable natural beauty in this selection of handcrafted doormats. Artistic construction made of complex braids and intricate weaves greets visitors with an impression of sophisticated simplicity.

100% handwoven coir rope. Case Pack of 1. S: 18" x 30". S-L: 24" x 36".



2391S - Sun Half Round

2391S-L - Sun Half Round Large



2033S - Knot-ical

2033S-L - Knot-ical Large



2372S - Basket Weave

2372S-L - Basket Weave Large



2370S - Embossed Lines



2371S - Triangles (1.5" thick)



2424S - Braided

2424S-L - Braided Large



2420S - Homespun

2420S-L - Homespun Large

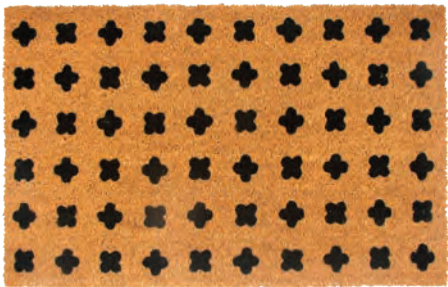
BASICS COLLECTION

Natural coir and simple graphics are a timeless combination for our Basics collection.
Available in three versatile sizes with sturdy PVC backing, these functional pieces offer year-round style.

100% coir with backing - 3 sizes: 18" x 30", 24" x 36", 24" x 60" - Case Pack of 4.



Concentric - 511EB18x30
511EB24x36
511EB24x60



Positivity - 512EB18x30
512EB24x36
512EB24x60



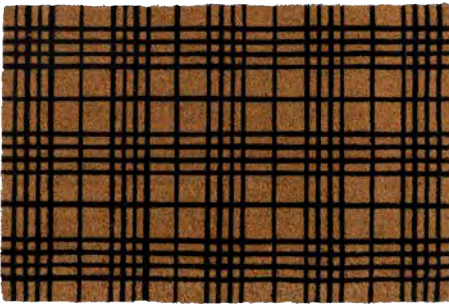
With Border - 502EB18x30
502EB24x36
502EB24x60



Natural Coir - 501EB18x30
501EB24x36
501EB24x60



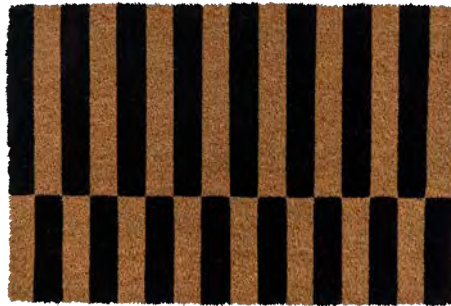
Pineapple - 504EB18x30
504EB24x36
504EB24x60



Fine Plaid - 509EB18x30

509EB24x36

509EB24x60



Alternating - 510EB18x30

510EB24x36

510EB24x60



Bold Stripes - 508EB18x30

508EB24x36

508EB24x60



Diamonds - 506EB18x30

506EB24x36

506EB24x60



Fishbone - 507EB18x30

507EB24x36

507EB24x60



Crisscross Welcome - 505EB18x30

505EB24x36

505EB24x60

FLORAL

P: 100% coir with backing - 17" x 28" - Case Pack of 4. S: 100% handwoven coir - 18" x 30" - Case Pack of 1.



P2215 - Looking Sharp



1078S - Lavender Welcome



2205S - Joyful Scandi

also in
PILLOW



2260S - Grand Ginkgo



2169S - Succulent



P2030 - Forget-Me-Nots



2210S - Summer Garden



2256S - Strawberry Vines



P2453 - Paradise in Bloom



919S - Dahlias



P2414 - Nice to See You



P2270 - Unique Blooms



2412S - Eucalyptus



2410S - Hello



2409S - Birds in Bloom



2329S - Lemons



P2415 - Sunrise



2167S - Tropical Leaves



2328S - Love Grows Here



P2342 - Moths



2443S - Pears

SUMMER & NAUTICAL

P: 100% coir with backing - 17" x 28" - Case Pack of 4. S: 100% handwoven coir - 18" x 30" - Case Pack of 1.



2444S - Scalloped



P2450 - Lobster



P2451 - Jellyfish



P2448 - Island Sunrise



P2452 - Sea Glass



P2272 - Beach Vibes



2411S - Octopuses

also in
PILLOW



P2344 - Flamingo Lagoon

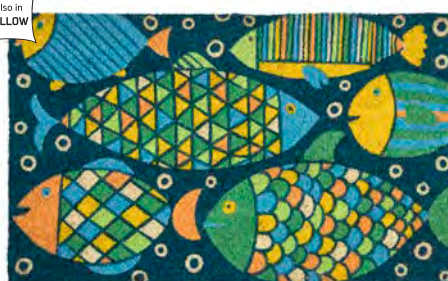


931S - Starfish Welcome



2257S - Paddles

also in
PILLOW



P2332 - Fancy Fish

also in
PILLOW



2258S - Fun in the Sun



P2115 - Blue Anchor



P2331 - Man Overboard



P2025 - Gone Fishin'



2170S - Turtle



P2114 - Seaside



2319S - Sweet Summer Home



P2252 - Hamilton

GEOMETRICS

P: 100% coir with backing - 17" x 28" - Case Pack of 4. S: 100% handwoven coir - 18" x 30" - Case Pack of 1.



2021S - Celtic



P2449 - Sticks and Stones 19" x 28"



536S - White Polka Dots



P2417 - Macrame



P2418 - Meknes

also in
PILLOW



P2419 - Herringbone



2261S - Sedona

WELCOME & OTHER MESSAGES

P: 100% coir with backing - 17" x 28" - Case Pack of 4. S: 100% handwoven coir - 18" x 30" - Case Pack of 1.



2445S - Evil Eye



P2446 - Cross Your Heart



P2337 - Honey I'm Home



2322S - Winged Heart



P2285 - Shut the Front Door



P2340 - Love Letter



2259S - Fáilte



P2341 - Shenanigans



P2346 - Buffalo Plaid Welcome

ANIMAL KINGDOM

P: 100% coir with backing - 17" x 28" - Case Pack of 4. S: 100% handwoven coir - 18" x 30" - Case Pack of 1.



2326S - Roosters



2327S - Fine Felines



P2273 - Love Cats



2171S - Peeping Cats



431S - Dog Silhouettes



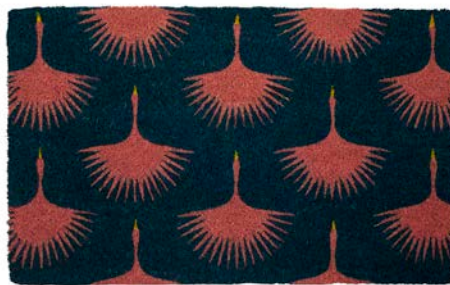
P873 - Wipe Your Paws 18" x 30"



P2023 - Cat Face



2325S - Zebra Herd



P2416 - Herons



2262S - Leopards



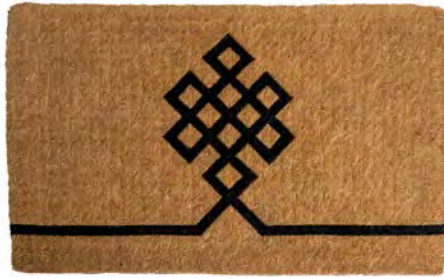
P2447 - Finches

ESTATE COLLECTION

Extra-thick 1½" 100% handwoven coir - 3 sizes: F 18" x 30", F-M 24" x 36", F-E 36" x 72" - Case Pack of 1.



933F - The One with the Border



2368F - Knotted Border



834F - Rainbow



2413F - Check Please
2413F-M



099F - Blank
099F-M
099F-E



2292F - Queen Bee
2292F-M
2292F-E



BOOTSCRAPERS

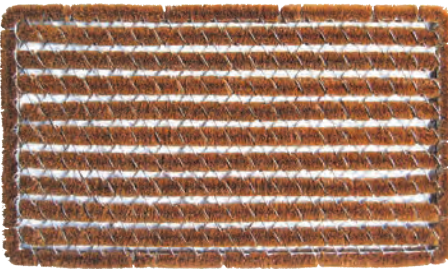
All-natural coir and rubber. Rugged utility with elegant designs. Outdoor use. BR: Case Pack of 4. BR-L: Case Pack of 1.



164BR - Striped 18" x 30"



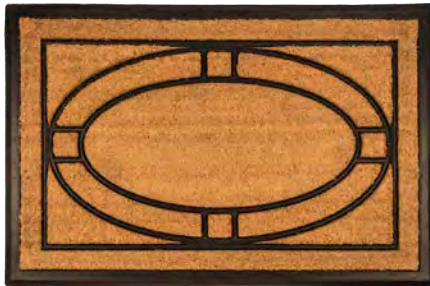
157BR - Shell 18" x 30"



630BR - Rectangle Stripes Wire Brush
16" x 27"



630BR-L - Rectangle Stripes Wire Brush Long
18" x 42"



2144BR - Ellipse 18" x 30"
2144BR-L 24" x 36"



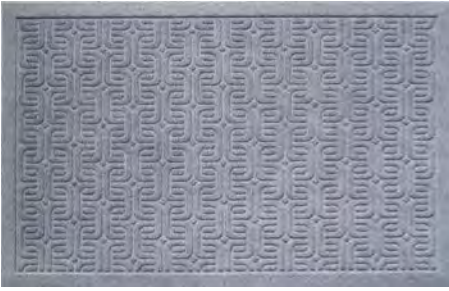
2145BR - Welcome with Border 18" x 30"
2145BR-L 24" x 36"



2146BR - Diagonal Tiles 18" x 30"
2146BR-L 24" x 36"

WEATHER BEATERS

Heavy-duty polypropylene with rubber backing. Low-profile. Indoor or outdoor use. 22" x 35". Case Pack of 4.



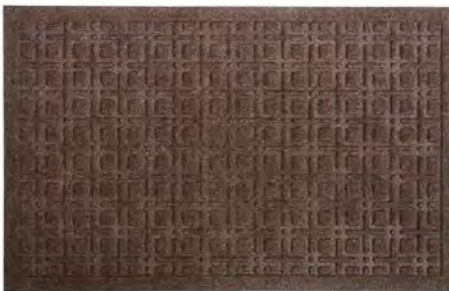
B9005 - Geometric Pattern



B9018 - Fishbone



B9019 - Zebra



B9020 - Lattice



B9021 - Welcome Circles



B9001 - Pineapple



B9014 - Annalise



B9000 - Fleur de Lis



B9006 - Seashells

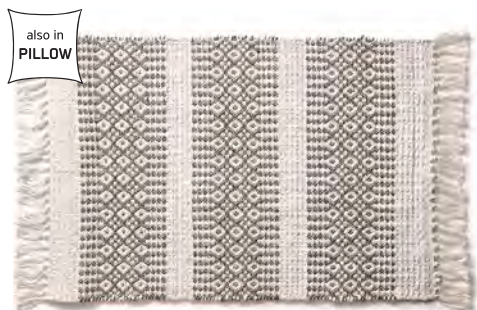


Rugs



OUTDOOR & INDOOR

To be styled indoors or out, smooth polyester thread made from recycled plastic bottles is handwoven on traditional looms to create strong fabric that's colorfast and durable. Layer over a rug pad for maximum stability.



Sophia, Gray - **ER64193** - 2' x 3'

ER64205 - 3' x 5'

ER64218 - 5' x 8'



Sophia, Yellow - **ER64163** - 2' x 3'

ER64175 - 3' x 5'

ER64188 - 5' x 8'



Charlotte - **ER63983** - 2' x 3'

ER63995 - 3' x 5'

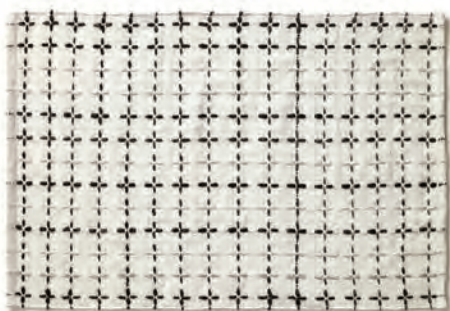
ER64008 - 5' x 8'



Riley - **ER64103** - 2' x 3'

ER64115 - 3' x 5'

ER64128 - 5' x 8'



Positives - **ER5873** - 2' x 3'

ER5885 - 3' x 5' **ER5898** -

5' x 8'



Knotted - **ER550.3** - 2' x 3'

ER551.5 - 3' x 5' **ER552.8** -

5' x 8'



Stripes and Braids - **ER553.3** - 2' x 3'

ER554.5 - 3' x 5'

ER555.8 - 5' x 8'



Liam - **ER64043** - 2' x 3'

ER64055 - 3' x 5'

ER64068 - 5' x 8'



Caden - **ER64283** - 2' x 3'

ER64295 - 3' x 5'

ER64308 - 5' x 8'

also in
PILLOW



Milos - **ER5383** - 2' x 3'

ER5395 - 3' x 5'

ER5408 - 5' x 8'



Olivia, Sand - **ER64253** - 2' x 3'

ER64265 - 3' x 5'



Olivia, Gray - **ER64223** - 2' x 3'

ER64248 - 5' x 8'

also in
PILLOW



Emma, Navy - **ER64313** - 2' x 3'

ER64325 - 3' x 5'

ER64338 - 5' x 8'



Emma, Green - **ER64343** - 2' x 3'

ER64355 - 3' x 5'

ER64368 - 5' x 8'



ALL-WEATHER POLYPROPYLENE

Our multi-purpose rugs are woven from polypropylene yarn to provide all-weather, outdoor durability while maintaining the soft texture of an indoor style. Versatile colors and plush details are suitable for any living space, inside or out.

Offered in size: 2' x 3'.



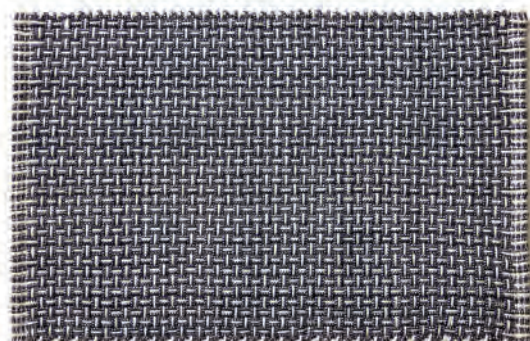
PP215 - Modern Classic



PP216 - Black Plaid



PP535 - Navy Bold



PP544 - Capri

Hand-braided polypropylene rope.



PP541 - Gray Stripe

NATURAL

Natural textures of leather, jute, and cotton are understated yet luxurious in our collection of natural rugs. Woven patterns and tufted details add comfort and interest to every bedroom, dining room, or living area. Offered in multiple sizes for indoor use; layer over a rug pad for maximum stability.



Bryce / 100% Jute - JR401 - 5' D



Nova / 100% Jute - JR400 - 5' D



Arches / 100% Jute - JR900 - 2' x 3'



Jackson, Chocolate / 90% Leather, 10% Cotton

LR113.3 - 2' x 3'

LR114.5 - 3' x 5'

LR115.8 - 5' x 8'



Jackson, Blue-Gray / 90% Leather, 10% Cotton

LR64433 - 2' x 3'

LR64445 - 3' x 5'

LR64458 - 5' x 8'



Jackson, Sky / 90% Leather, 10% Cotton

LR110.3 - 2' x 3'

LR111.5 - 3' x 5'

LR112.8 - 5' x 8'



Aiden / 100% Jute

JR64373 - 2' x 3'

JR64385 - 3' x 5'

JR64398 - 5' x 8'



Grayson / 40% Leather, 40% Cotton, 20% Jute

LR64463 - 2' x 3'

LR64475 - 3' x 5'

LR64488 - 5' x 8'



Noah / 100% Jute

JR64403 - 2' x 3'

JR64415 - 3' x 5'

JR64428 - 5' x 8'



Aegean / 100% Cotton - **CR717.3** - 2' x 3'

CR718.5 - 3' x 5'

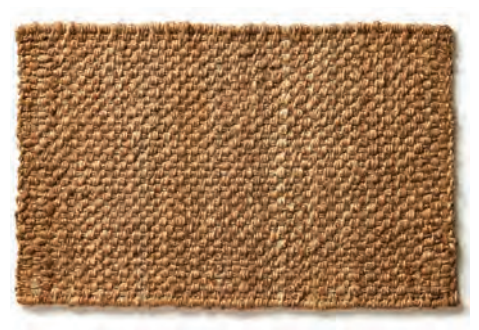
CR719.8 - 5' x 8'



Parker / 100% Jute - **JR200.3** - 2' x 3'

JR201.5 - 3' x 5'

JR202.8 - 5' x 8'



Maxon / 100% Jute - **JR203.3** - 2' x 3'

JR204.5 - 3' x 5'

JR205.8 - 5' x 8'

Craft & Forge

Our collaboration with Craft & Forge brings 18th century artisan craftsmanship from Colonial Williamsburg into the modern-day home. Embracing heritage and honoring tradition, early American style is celebrated through authentic design and quality materials. Crossing weaves and linear patterns embellish four styles of outdoor rugs and pillows, reflecting the textile designs created by skilled makers who pulled inspiration from the natural world.

100% polyester fiber from recycled materials. Offered in multiple sizes for indoor or outdoor use; layer over a rug pad for maximum stability.



Buttonwood - CF3000 - 2' x 3'

CF5000 - 3' x 5'

CF8000 - 5' x 8'



Arrow Root - CF3001 - 2' x 3'

CF5001 - 3' x 5'

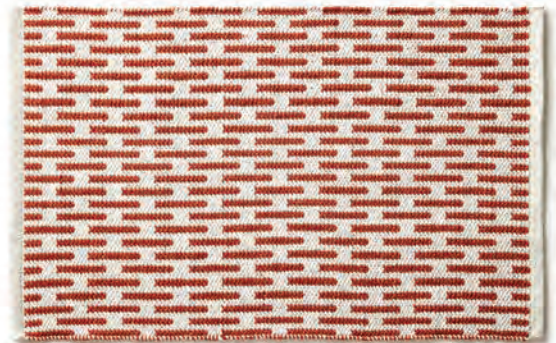
CF8001 - 5' x 8'



Cross Vine, Gray - CF3002 - 2' x 3'

CF5002 - 3' x 5'

CF8002 - 5' x 8'



Cross Vine, Auburn - CF3003 - 2' x 3'

CF5003 - 3' x 5'

CF8003 - 5' x 8'



CF600 - Buttonwood



CF700 - Buttonwood



CF601 - Arrow Root



CF701 - Arrow Root



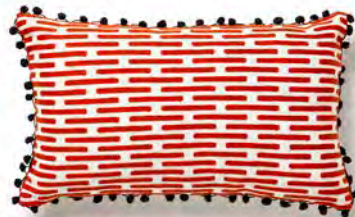
CF602 - Cross Vine, Gray



CF702 - Cross Vine, Gray



CF603 - Cross Vine, Auburn



CF703 - Cross Vine, Auburn

100% polyester fiber from recycled materials. Zipper closure. Virgin polyfill insert (included). 17" square, 12" x 20" lumbar. Case Pack of 2.



Pillows



HANDMADE - OUTDOOR PILLOWS

100% polyester fiber from recycled materials. Zipper closure. Virgin polyfill insert (included). 17" square, 12" x 20" lumbar.



EK543 - Eleanor



EK538 - Stripes with Tassels



EK541 - Breakers

also in
RUG



EK544 - Eleanor



EK539 - Stripes with Tassels



EK542 - Breakers



EK508 - Arrows



EK509 - Tri-Striped



EK510 - Oslo



EK546 - Knotted with Fringe



EK513 - Southwestern



EK516 - Lillehammer



EK540 - Vines



EK545 - Squared with Fringe



EK514 - Bergen



EK519 - Malta

also in
RUG



EK530 - Milos



EK515 - Copenhagen



EK521 - Ibiza



EK64577 - Amelia



EK64582 - Amelia

also in
RUG



EK64617 - Lucas, Navy



EK64622 - Lucas, Navy





EK-014-515 - Coral



EK-014-517 - Sailboat



EK-014-516 - Anchor



EK532 – Santorini, Gray



EK531 – Santorini, Blue



EK64492 – Ava, Charcoal



EK-014-509 – Infinity Loops,
Yellow Ocher



EK-014-507 – Summer



EK-014-505 – Spring



EK-014-510 – Infinity Solids, Gray



EK-014-508 – Summer



EK-014-506 – Spring



EK-014-518 – Triangles



EK-014-533 – Thelma, Pink



EK-014-535 – Thelma, Gray



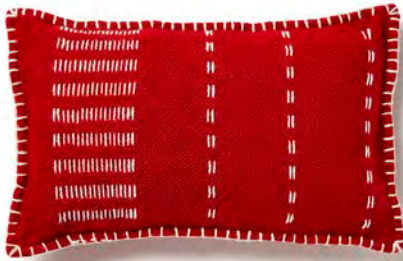
EK-014-519 – Triangles



EK-014-532 – Louise, Pink/Orange



EK-014-534 – Louise, Gray/Black



EK64652 – Stitches, Red



EK64662 – Stitches, Navy



EK64502 – Ava, Yellow



EK534 - Bands, Light Gray



EK535 - Bands, Gold



EK533 - Bands, Deep Orange



EK524 - Columns, Sand



EK511 - Budapest



EK512 - Budapest



EK517 - Sicily



EK518 - Sardinia



EK-014-526 - Waves, Navy/Aqua



EK536 - Diamonds & Stripes



EK537 - Diamonds & Stripes



EK64677 - Archie, Mushroom



EK64682 - Archie, Mushroom



EK-014-511 – Infinity Loops, Aqua



EK-014-531 - Waves, Black/Taupe



EK-014-530 - Waves, Black/Taupe



EK-014-512 – Infinity Solids, Blue



EK-014-536 - Infinity Solids,
Navy/Yellow



EK-014-514 – Infinity Solids, Green

GRAPHIC - OUTDOOR PILLOWS

T-spun, soft, medium weight polyester cover. Pattern on front and back. Zipper closure. Virgin polyfill insert (included). 17" square, 12" x 20" lumbar.

also in
DOORMAT



OP63882 - Fancy Fish



TY-014-153 - Aegean, Aqua



TY-014-121 - Aegean, Navy

also in
DOORMAT



OP63907 - Fun in the Sun



TY-014-152 - Aegean, Aqua



TY-014-120 - Aegean, Navy



TY-014-501 - Sonoma, Blue



TY-014-503 - Sonoma, Orange

also in
DOORMAT



OP63917 - Herringbone



TY-014-502 - Sonoma, Blue



TY-014-504 - Sonoma, Orange

also in
DOORMAT



OP63922 - Herringbone



OP503 - High Tides, Mint



OP497 - Kaleidoscope



OP63937 - Grand Ginkgo



OP502 - High Tides, Teal



OP63897 - Sunset Floral



TY-014-292 - Tropical Leaves



OP499 - Flamingo Lagoon



OP63947 - Succulents



OP63867 - Stars



TY-014-206 - Ameena, Navy/Coral



TY-014-231 - Ameena, Navy/Green



OP63872 - Stripes





TH646 – Breakers



TH645 – Oia

OUTDOOR TROWS

Our soft, oversized throw blankets turn chilly nights into cozy fall and winter memories, making any space inviting with an additional layer of sustainable comfort. Made from recycled plastic bottles, the plush handwoven fabric is luxurious, providing warmth through autumn nights around the bonfire or holiday evenings gathered by the hearth.

Offered in size: 50" x 60".

MEET OUR ARTISTS



CAROL
JOHNSTON

Carol Johnston is a graphic designer, brand strategist, and travel enthusiast based out of Washington, DC. Having lived in London for a couple of years, Carol's design aesthetic is heavily influenced by European design. Her favorite mats are in the Holiday collection. "I really enjoyed the diverse design styles I got to work with, and the fun of designing something for the most wonderful time of the year."

caroljohnston.com



LAURA
KICEY

Laura Kicey is a photographer, illustrator, feline enthusiast, and graphic designer based near Philadelphia, PA. Since 2004, Laura's art has been shown in numerous galleries and museums across the U.S., and has been licensed by such clients as Urban Outfitters, Wall Street Journal and Architectural Digest. Her photographs and digital composites have been featured prominently in print publications internationally.

oliveandryecats.com
laurakicey.com



ERIN
MCMANNES

Erin McManness is an illustrator in Atlanta, GA, under her brand Paper Raven Co. (est. 2015), and loves working on projects and licensing for cards, gifts, and home décor. She has collaborated on projects with Macy's (among other brands) and has authored two Instructional Art Books.

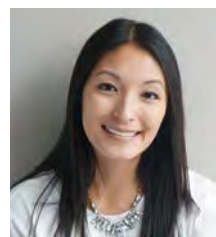
shoppaperraven.com



SHANNON
MCNAB

Shannon McNab is an American surface designer living in Dublin, Ireland who creates exuberant, colorful artwork inspired by her lifelong love of handmade crafts and travels abroad. Her designs have been licensed to clients including Papyrus. She also founded Sketch Design Repeat, an educational site for aspiring surface designers.

shannonmcnab.com



TIFFANY
WONG

Tiffany Wong is a surface pattern designer and food lover based in Toronto, Canada. She loves to create patterns that are fresh, fun and friendly in modern palettes. Her inspiration is drawn from her everyday life in the city, travel experiences and nature. Tiffany's patterns can be found on home, baby, stationery products, and more.

maylayco.com



KATE
RHEES

Kate Rhees is a professional accountant, turned eye-candy-maker extraordinaire. She believes that most things in this world are better when covered in a fabulous pattern. So, in hopes of making the world a better place, Kate tirelessly creates repeat patterns from her studio at the base of the Rocky Mountains, in Salt Lake City, Utah. Her prints have been featured on everything from socks and sheets to wallpaper and puzzles.

katerhees.com



BETH
SCHNEIDER

Beth Schneider is a surface designer from Chicago that draws inspiration from her architecture roots as well as from nature, fashion & interior design. She loves to draw and paint with unique and modern color combinations that define her clean, fresh and fun style. Her patterns and illustrations have been licensed on everything from stationery products to home décor, textiles, paper goods and more.

bethschneiderdesigns.com



MARIA
VASCHUK

Designer Maria Vashchuk runs The Tiny Garden Design Studio. She lives and works in Haarlem, the Netherlands. Her atelier is surrounded by a garden, where Maria draws her inspiration. Most days, you can find Maria doodling in her atelier or enjoying a cup of tea in her tiny urban garden, listening to the songs of birds and observing the life and relocation of local cat community. She creates colorful, charming, and elegant patterns that warm hearts and make you feel at home wherever you are.

thetinygarden.com



VANJA
PAUNOVIC

Vanja Paunovic obtained her Master of Architecture at the Belgrade University in 2010, and continued her creative career at a few companies as an architect in Belgrade, Serbia. Vanja's skills and interests range from architecture, illustration, art to graphic and industrial design. She won a few international competitions in these fields. Since 2018, she has worked as a freelancer.

[instagram.com/pattern_creator](https://www.instagram.com/pattern_creator)

CUSTOM DESIGNS & PRIVATE LABEL

Contact us at sales@dhomebrands.com for creative custom solutions.

WOOD DOORMAT DISPLAY

Our baltic birch plywood display holds mats up to 35" wide. Including wheels and header, display is 73" tall by 38" wide, with shelves measuring 24" deep. Strong and sturdy with convenient casters, 20-30 mats can be stacked across five slanted shelves.

For a ready-to-merchandise assortment, contact us to inquire about our display rack and doormat packages.



D-WideWood – Wood Five-Shelf Display

entryways

phone 609.704.9900

fax 908.345.5086

info@dhomebrands.com

www.dhomebrands.com

instagram @entryways



LIFE. STYLE. BRANDS.

www.dhomebrands.com
www.entrywaysusa.com

entryways

